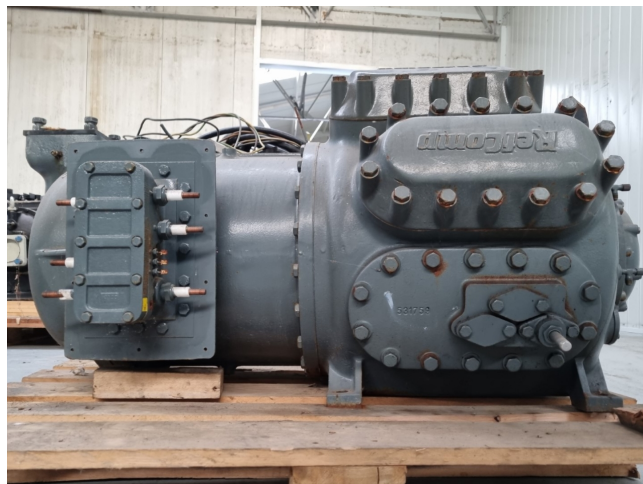


## Refcomp SM390LAKCB3

### Specifications

Marca	Refcomp
Tipo	SM390LAKCB3
Refrigerante	Freon
kW at +10°C/+40°C	489,0
kW at 0°C/+40°C	323,3
kW at -5°C/+40°C	256,0
kW at -10°C/+40°C	199,0
kW at -20°C/+40°C	116,0
Control de capacidad	✓
Mirilla	✓
m3 / h	464 m <sup>3</sup> /h
Peso kg.	814 kg
Tamaños	1300x750x700 mm (LxWxH)
Stock	1



### Description

#### Used Refcomp SM390LAKCB3

Overhauled Refcomp SM390LAKCB3 semi-hermetic reciprocating compressor on Freon with a sight glass. The compressor has a displacement of 464 m<sup>3</sup>/h. We only offer the compressor overhauled and we can offer a fast delivery time. Please contact us for more information!

\*Why choose for HOSBV? We are not only the largest used refrigeration specialist in Europe, but also, we deliver all equipment including an extensive test, warranty and industrial cleaning. \*If requested we are happy to arrange your logistics.

